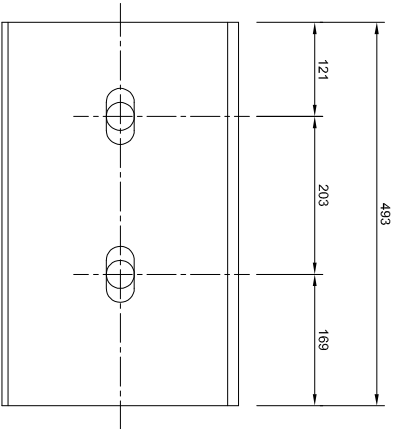
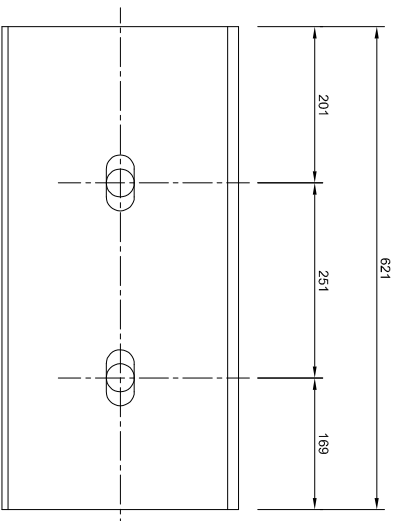
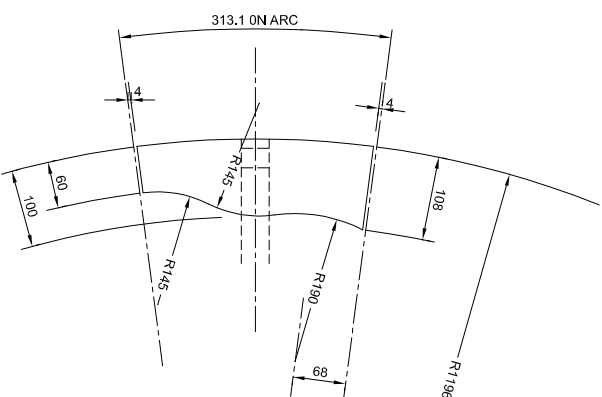


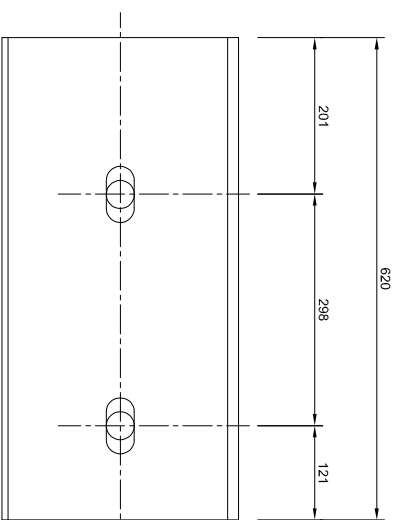
BODY LINER MK 'D1
No REQ'D:- 12
(CODE: 235-05)
COMM. CODE: 145-



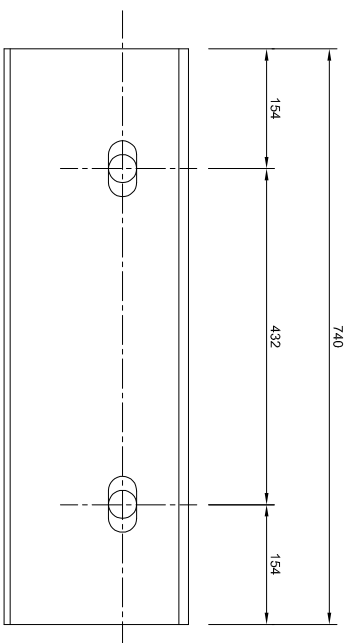
BODY LINER MK'D
No REQ'D:- 10
(CODE: 235-04)
COMM. CODE: 145-9011



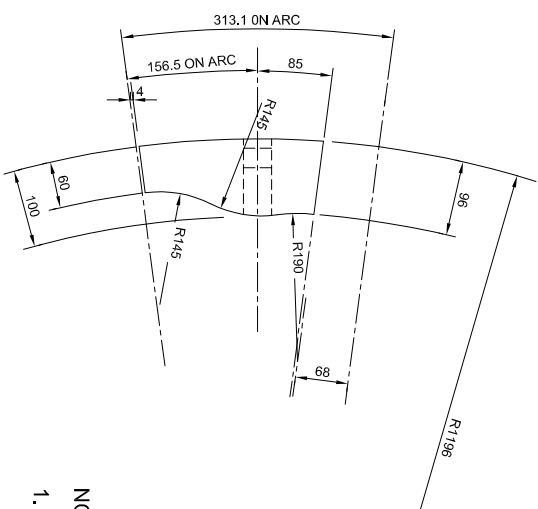
BODY LINER MK 'F'
No REQ'D:- 2
(CODE: 235-06)
COMM. CODE: 145-9010



BODY LINER MK 'G'
No REQ'D:- 2
(CODE: 235-07)
COMM. CODE: 145-9009

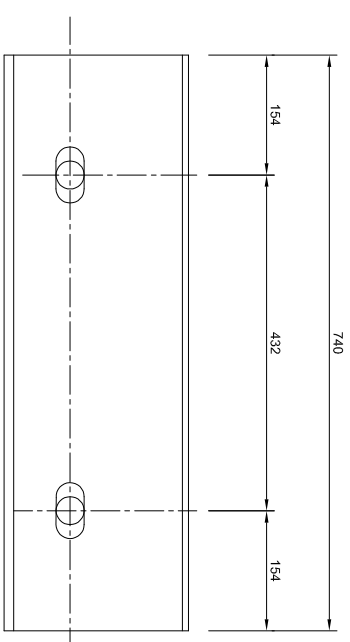


BODY LINER MK 'L1'
No REQ'D:- 1
(CODE: 235-13)
COMM. CODE: 145-1204

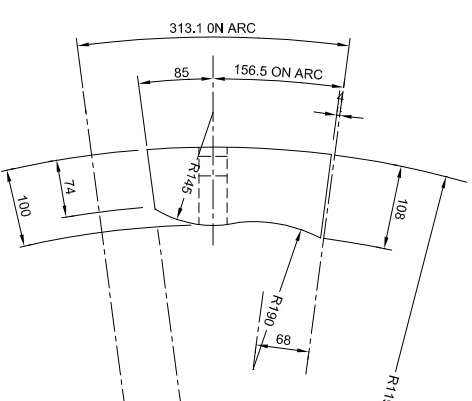


NOTES

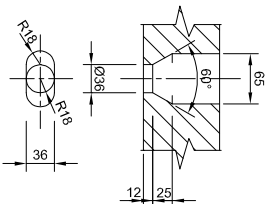
1. MANUFACTURE IN ACCORDANCE WITH FOSKOR ENG. SPECS. LATEST REVISION.
2. ALL SHARP EDGES TO BE REMOVED.



BODY LINER MK 'L'
No REQ'D:- 1
(CODE: 235-12)
COMM. CODE: 145-9006



A diagram of a rectangular plate. The width is labeled as 100 and the height is labeled as 74.



BOLT HOLE DETAILS.

[illegible]